



Call for a showing today:

Ronda Aldridge

Community Manager

(503) 363-6234

Sundial@cwres.com

Chris Guernsey

Oregon Sales Manager

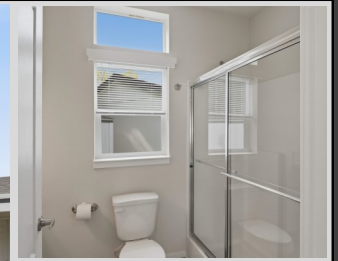
(503) 510-7373

Chris.Guernsey@cwres.com



HOME ADDRESS:

2200 Lancaster Dr SE
Space #7A
Salem, OR 97317



STUNNING BRAND NEW HOME!

- 1 Bedrooms / 1 Bathrooms
- Bedroom Closet Built-in Storage
- High Ceilings
- Low Maintenance Landscaping
- Stainless Steel Appliances
- \$1,265 Monthly Site Rent

Bright and Beautiful Palm Harbor 1 bed, 1 bath home with 672sq.ft. You open the door and walk into an open floor plan with lots of windows to provide tons of natural light making the home bright and airy.

The kitchen features an abundance of cabinets and counterspace and stainless steel appliances. The bedroom is spacious with built in storage in the closet.

Outside you have a wonderful porch to enjoy the outdoors along with a carport and storage shed.

\$119,900

Sundial MHP is a beautiful 55+ community in the heart of the Willamette Valley. The community is pet-friendly and boasts a calendar of activities, a neighborhood atmosphere and an impressive lineup of social amenities such as a club house, indoor pool/spa, library & billiard room.





LENDERS FOR FINANCING

21ST MORTGAGE

Joy Williams
800-955-0021 ext. 1200
joywilliams@21stmortgage.com
620 Market Street
One Center Square
Knoxville, TN 37902

FINANCIAL SERVICES UNLIMITED

Bruce Zechenelly
503-626-8590
fsu@fsuloan.com
11950 SW 2nd Street, Suite 300
Beaverton, OR 97005

NORTHWEST HOUSING SERVICES, LLC

Rick Budahl
877-467-9144 phone
208-461-8230 fax
rbudahl@cableone.net
website: www.nwmhloan.com
12360 Landau Way
Nampa, ID 83686

SOUND COMMUNITY BANK

Mark Weick
800-458-5585 ext. 421
mark.weick@soundcb.com
2941 S. 38th Street
Tacoma, WA 98409

CROSS COUNTRY MORTGAGE

Lisa McCormick
503-931-2185 phone
Lisa.McCormick@ccm.com

ROGUE CREDIT UNION

Richard Burroughs
541-622-7841
rburroughs@roquecu.org

COUNTRY PLACE MORTGAGE

Lisa Reynolds
360-709-9191
lreynolds@countryplacemortgage.com

Troy Morrow
tmorrow@countryplacemortgage.com

CREDIT HUMAN

J. Bretton
877-475-6852 x 2607 office
JBretton@CreditHuman.com
60 Lake Street, Ste 200
St. Albans, VT 05478

MORTGAGE COUCH

Tim Leatherman
503-342-8525 office
503-317-9828 cell
888-849-2316 fax
timl@mortgagecouch.com